

# TGQ1NPL



1

TGQ1NPL  
630A /

50Hz

AC230V/AC400V,

ATSE

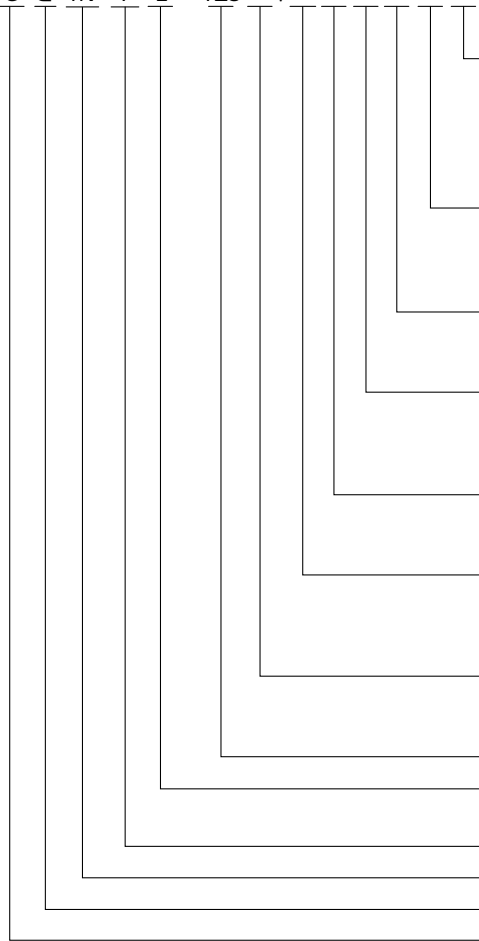
GB/T 14048.11

6-1



2

TG Q 1N P L - 125 /



63	16A	20A	25A	32A	40A	50A	63A
125	63A	80A	100A	125A			
250	125A	140A	160A	180A	200A		
	225A	250A					
630	250A	315A	350A	400A	500A	630A	

F

T

A:

B:

C:

Y

2

3

4

II

III

L

L

P

1N

PC

63-250

63/125/250/630

PC

1N



## TGQ1NPL

3

3.1

		TGQ1NPL- 63		TGQ1NPL- 125		TGQ1NPL- 250		TGQ1NPL- 630	
A		16A 20A 25A 32A 40A 50A 63A		63A 80A 100A 125A		125A 140A 160A 180A 200A 225A 250A		250A 315A 350A 400A 500A 630A	
II:	III:	II	III	II	III	II	III	II	III
AC230V/AC400V 50Hz									
(P)		2/3/4						3/4	
(Iq kA)		120							
AC230V <sup>A</sup>		3				4		6	
AC230V <sup>A</sup>		-	0.7	-	0.7	-	1	-	1.2
ms		75	100	75	100	75	100	120	150
AC-33A					AC-33B				
( )		10000 *						6000 *	
( )		30000 *						20000 *	
A	B	A/B/C	B/C	A/B/C	B/C	A/B/C	B/C	A/B/C	B/C
N m		2.5		10		12		28	
N m		3		15		18		33	
/ /									
s		A 0 30 B 0 240 C							
(V)		A/B( ) 165± 10% C( ): 100 200 ± 10% C( ): 200 300 ± 10%							
		85%± 110%±							
II: III:									
		II:	I	II	III:	I	O	II	

(\*)

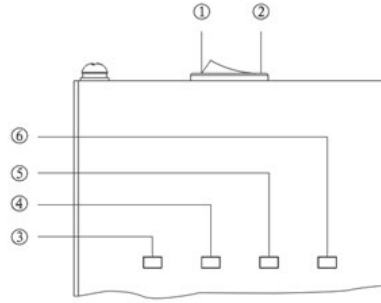




# TGQ1NPL

7

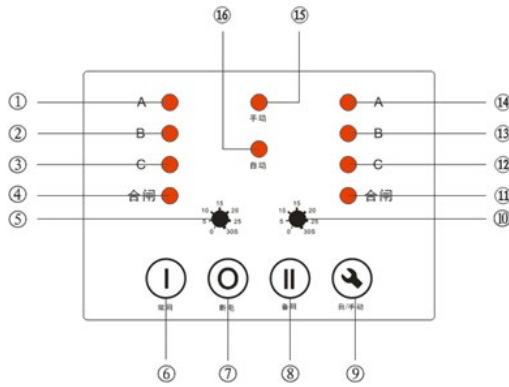
## 7.1 A



A

- 1
- 2 ( )
- 3
- 4
- 5
- 6

## 7.2 B



B

- |   |   |   |     |    |           |
|---|---|---|-----|----|-----------|
| 1 | 2 | 3 | ABC | 10 |           |
| 4 |   |   |     | 11 |           |
| 5 |   |   |     | 12 | 13 14 ABC |
| 6 |   |   |     | 15 |           |
| 7 |   |   |     | 16 |           |
| 8 |   |   |     |    |           |
| 9 | / |   |     |    |           |

## TGQ1NPL

7.2.1

“ ” “ ” “ I ” “ II ” I “ A ” “ B ”  
“ A ” “ ” “ ”  
“ B ” I “ ” II

7.3 C

C  
1 2 3 ABC  
4  
5 I  
6  
7  
8 /  
9  
10 11 12 CBA  
13 LCD

## TGQ1NPL

### 7.3.1 C

“ II ” “ / ” “ | ”  
 “ / ” “ | ”  
 “ II ” “ / ” “ 0 ” “ / ”  
 10

### 7.3.2 C

1	u270		200 300	280
2	u165		100 200	165
3	n270		200 300	280
4	n165		100 200	165
5			0 240	001
6			0 240	001
7	q		0 240	005
8	d		0 240	005
9	P		0-90 0	030
10	E	AISE	0 1= 2=	000
11		(F/F1)	0 9	000
12	J		1 32	001
13	b		1 2400 2 4800 3 9600 4 19200	003
14	H		0 3 3 ( 0 2 )	000

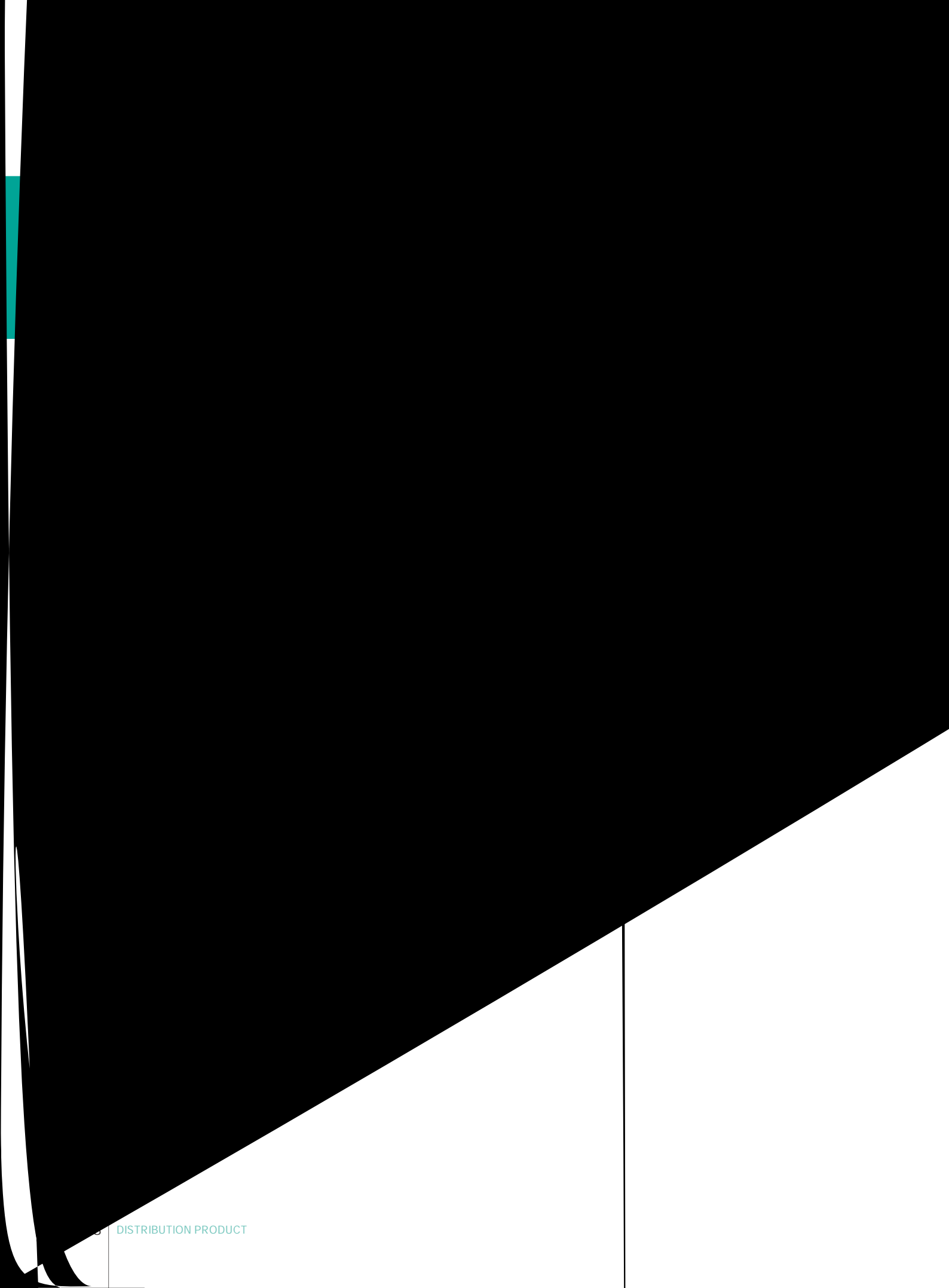
H=003

± 10V

### 7.3.3 C

F/F1 :

0 8	
/ 1	0= 1= 2= 3= 4= 5= 6-AISE 7= 8= 9=
	000



DISTRIBUTION PRODUCT



8.1.3

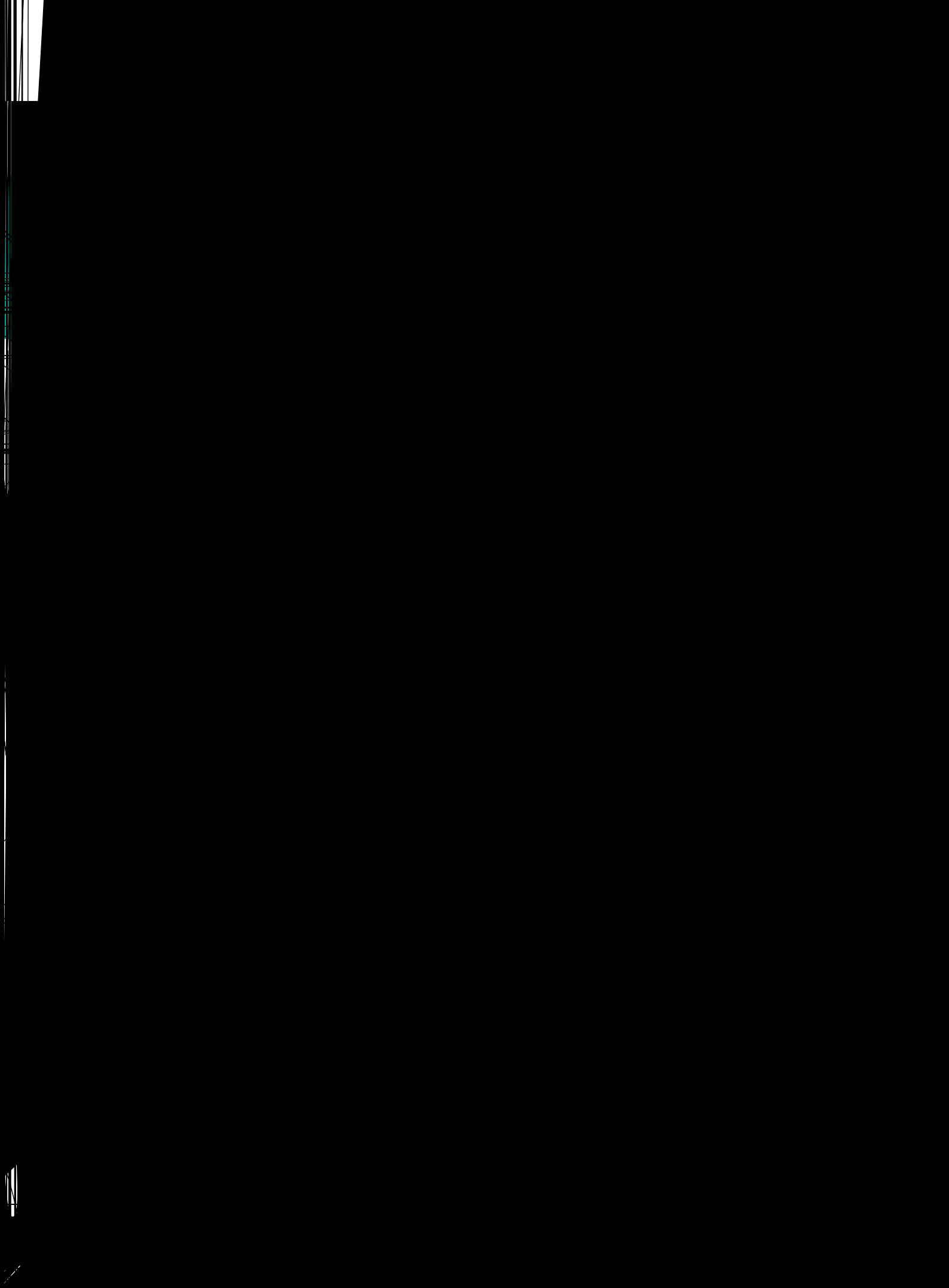
4

常用电源I  
N

备







# TGQ1NPL

8.4 A C

8.5 B



/

N

A1      A      N1

N

A2      A      N2

# TGQ1NPL

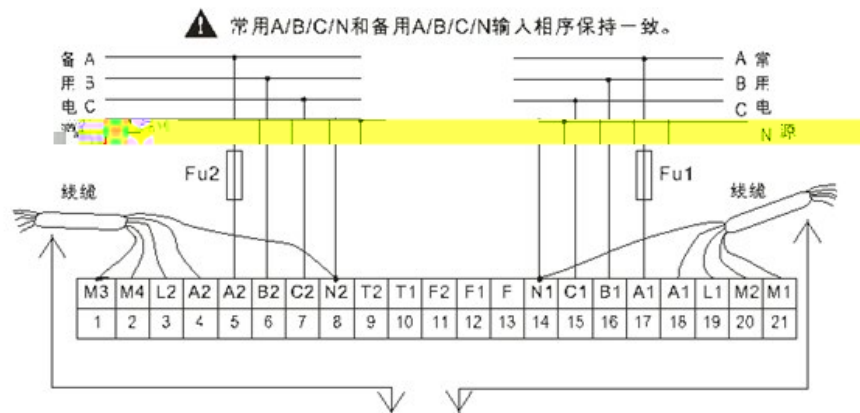
8.6 C

M3 M4  
 L2  
 A2 A  
 A2 B2 C2 N2  
 T1 T2  
 F2 F1 F F1 F  
 A1 B1 C1 N1  
 A1 A  
 L1  
 M2 M1  
 R- R+ DC9V- 36V  
 GND R1  
 485A 485B RS485 EGND

17-14 5-8

1( 1- 32, ) 9600bps

8.7 C

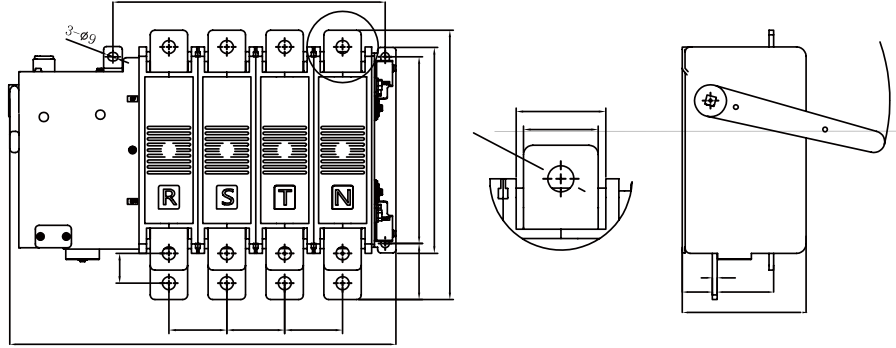


8.7

17 16 15 14 5 6 7 8

ABCN  
 FU1 FU2 10A





(A)		A	B
630	2P	295	168
	3P	359	230
	4P	419	292

mm

30mm(400V) 60mm(690V)