

TGB1NLA- 32 63

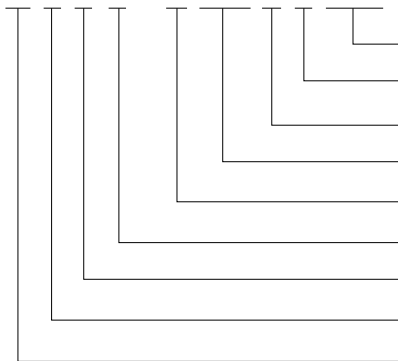


1

TGB1NLA- 32 63
230V /400V 63A

2

TG B 1N LA - 63 1P+N C 16 30mA



mA

C/D

(1P+N/2P/3P/3P+N/4P)

(A) 32 63

LA A

3

3.1

1

1

	TGB1NLA 32					TGB1NLA 63				
	GB/T16917.1					IEC61009-1				
	CCC									
	1P+N	2P	3P	3P+N	4P(N)	1P+N	2P	3P	3P+N	4P(N)
Hz										
A	I _{nm}					32				
A	I _e					6 10 16 20 25 32				
V	U _b					AC230(1P+N 2P) AC400(3P 3P+N 4P)				
V	U _i									
kV	U _{imp}									
kA	I _{cs}									
kA	I _{cn}									
	C(5n 10n D)10n 14n					C(5n 10n D)10n 14n				
	2					2				
	MK CF SD MK+CF + M MN M+MN					MK CF SD MK+CF + M MN M+MN				
	A					A				
nA	I _n					15 30 50 75 100 300				
	0.1s					0.1s				

TGB1NLA- 32 63

1

	TGB1NLA- 32	TGB1NLA- 63
	20000	20000
	IP20	IP20
	- 35 +70	- 35 +70
	2000m	2000m
(mm ²)		25
(N _h)	2	2.5
	II III	II III
	THB5- 7.5	THB5- 7.5

3.2

2

2

	A			
	1. 13In		t 1h	
	1. 45In	1. 13In	t 1h	5s
	2. 55In		1s t 60s In 32A 1s t 120s In 32A	
c	5In		t 0.1s	
	10In		t 0.1s	
	10In		t 0.1s	
	14In		t 0.1s	

30

3.3

C

D

TGB1NLA- 32 63

3.4

25mm²

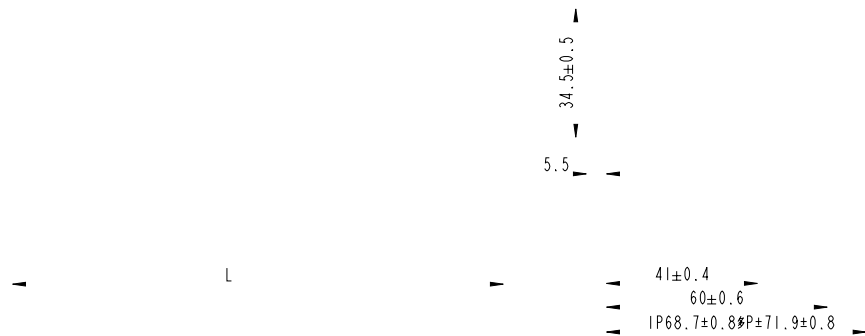
3

2.5N· m

3

A	mm ²
16 20	2.5
25	
32	
40 50	

4



4

		L (mm)
TGB1NLA- 32		
TGB1NLA- 63		
TGB1NLA- 32	2P	
TGB1NLA- 63	2P	72
TGB1NLA- 32		
TGB1NLA- 63		
TGB1NLA- 32		
TGB1NLA- 63		117
TGB1NLA- 32		117
TGB1NLA- 63		

TGB1NLA- 32 63

5

5.1		TGB1NLA- 32
5.2	C	
5.3	2P	
5.4	10A	
5.5		30mA
5.6	50	
5.7	TGB1NLA- 32 2P C10 30mA	50